

III PREDATORS

Chrysopids
(Predator of sucking pests)
Stage of supply: Eggs
150/1000 eggs (RG)
300/1000 eggs (RC)
100/1000 eggs (Farmers)



Cryptolaemus montrouzieri Mulsant^A
Scymnus coccivora Ayyar^B
(Coleoptera: Coccinellidae)
(Predators of mealybugs)
Stage of supply: Adults/Grubs
A. 200/100 adults, 100/ 100 grubs (RG)
400/100 adults, 200/100 grubs (RC)
B. 100/100 adults (RG)
200/100 adults (RC)



Chilocorus nigrita (Fabricius)
(Coleoptera: Coccinellidae)
(Predator of scale insects)
Stage of supply: Adults/ grubs
200/100 adults, 100/ 100 grubs (RG)
400/100 adults, 200/100 grubs (RC)



Cheilomenes sexmaculata (Fabricius),
Coccinella septempunctata Linnaeus
(Predators of aphids)
Stage of supply: Adults/Eggs
200/100 adults, 150/ 100 eggs (RG)
400/100 adults, 300/100 eggs (RC)



Brumoides suturalis (Fabricius)
(Predator of aphids, mealybugs, scales and whiteflies)
Stage of supply: Adults/grubs
200/100 adults, 150/ 100 grubs (RG)
400/100 adults, 300/100 grubs (RC)



Curinus coeruleus (Mulsant)
(Coleoptera: Coccinellidae)
(Predator of subabul psyllid)
Stage of supply: Adults
200/100 adults (RG)
400/100 adults (RC)



Cardiastethus exiguus Poppius
Blaptostethus pallescens Poppius
Xylocoris flavipes (Reuter)
(Hemiptera: Anthocoridae)
(Predators of lepidopteran/sucking/storage pests)
Stage of supply: Adults/Nymphs
75/100 adults/nymphs (RG)
150/100 adults/nymphs (RC)



Orius tantillus Motschulsky
(Hemiptera: Anthocoridae)
(Predator of sucking pests)
Stage of shipment/ supply: Adults/
Nymphs
Nucleus culture: 50 (RG &RC)

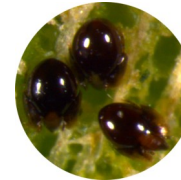


IV WEED KILLERS

Cyrtobagous salviniae Calder & Sands
Neochetina eichhorniae Warner
Neochetina bruchi Hustache
(Coleoptera: Curculionidae)
(Against water hyacinth)
Stage of supply: Adults
100/100 adults (RG)
200/100 adults (RC)



Orthogalumna terebrantis Wallwork
(Acari: Cryptostigmata: Galumnidae)
(Against water hyacinth)
Stage of supply: Adults/Nymphs
200/1000 adults
400/100 adults



Zygogramma bicolorata Pallister
(Coleoptera: Chrysomelidae)
(Against *Parthenium*)
Stage of supply: Adults
100/100 adults (RG)
200/100 adults (RC)



REPOSITORY OF LIVE INSECTS AT NBAII



National Bureau of Agriculturally Important Insects (ICAR)
H.A. Farm Post, Bellary Road
Bangalore 560024 (Karnataka, India)

Indents for culture should reach NBAII 15 days prior to the date of requirement. Advance payment should be made in the form of DD drawn in favour of the Director, NBAII, Bangalore.

*** Rates subject to revision.**

Live Insect Cultures available

(Rate in Rs.)

(RC: Rate for commercial units)

(RG: Rate for ICAR Institutes/SAUs/Students)

I. HOST INSECTS

Helicoverpa armigera (Hübner)

(Lepidoptera: Noctuidae)

Stage of supply: Pupae/eggs

5/pupa, 80/100 eggs (RG)

10/pupa, 160/100 eggs (RC)



Spodoptera litura (Fabricius)

(Lepidoptera: Noctuidae)

Stage of supply: Pupae/eggs

4/pupa; 50/100 eggs (RG)

8/pupa; 100/100 eggs (RC)



Corcyra cephalonica Stainton

(Lepidoptera: Pyralidae)

Stage of supply: Eggs

30/1 cc eggs (RG)

50/1 cc eggs (RC)



Sitotroga cerealella (Olivier)

(Lepidoptera: Gelechiidae)

Stage of supply: Eggs

30/1 cc eggs (RG)

50/1 cc eggs (RC)



Callosobruchus sp.

(Coleoptera: Bruchidae)

Stage of supply: Adults

100/100 adults (RG)

200/100 adults (RC)



Plutella xylostella (Linnaeus)

(Lepidoptera: Yponomeutidae)

Stage of supply: Pupae

100/100 pupae (RG)

200/100 pupae (RC)



Maconellicoccus hirsutus (Green),

Ferrisia virgata (Cockerell)

(Hemiptera: Pseudococcidae)

Stage of supply: Ovisacs

125/infested pumpkin (RG)

250/infested pumpkin (RC)



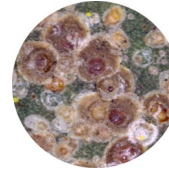
Hemiberlesia lataniae (Signoret)

(Hemiptera: Diaspididae)

Stage of supply: Nymphs/adults

Rate: 250/infested pumpkin (RG)

500/infested pumpkin (RC)



Chilo partellus (Swinhoe)

(Lepidoptera: Pyralidae)

Stage of supply: Pupae

4/pupa; 50/100 eggs (RG)

8/pupa; 100/100 eggs (RC)



Phenacoccus solenopsis Tinsley

Paracoccus marginatus Williams &

Granara de Willink

(Hemiptera: Pseudococcidae)

Stage of supply: Ovisacs/females

125/20 infested potatoes (RG)

250/10 infested potatoes (RC)



II PARASITOIDS

Trichogrammatids (48 spp./strains)

Stage of supply: Parasitized eggs

Exotic species/strains

300/1cc parasitized eggs (RG)

600/1cc parasitized eggs (RC)

Indigenous species/strains

50/1cc parasitized eggs (RG)

100/1cc parasitized eggs (RC)



Trichogramma chilonis/T. japonicum

(Hymenoptera: Trichogrammatidae)

(Egg parasitoids of lepidopteran pests)

Stage of supply: Parasitized eggs

50/1cc parasitized eggs (RG)

100/1cc parasitized eggs (RC)



Telenomus remus Nixon

(Hymenoptera: Scelionidae)

(Egg parasitoid of *Spodoptera litura*)

Stage of supply: Parasitized eggs

100/10 egg masses (RG)

200/10 egg masses (RC)



Goniozus nephantidis (Muesebeck)

(Hymenoptera: Bethyliidae)

(Larval parasitoid of coconut black headed caterpillar)

Stage of supply: Cocoons

50/100 cocoons (RG)

100/100 cocoons (RC)



Chelonus blackburni Cameron

(Hymenoptera: Braconidae)

(Egg-larval parasitoid of Potato Tuber Moth)

Stage of supply: Adults

Quantity: 100 nos.

75/100 adults (RG)

150/100 adults (RC)



Cotesia plutellae Kurdjamov

(Hymenoptera: Braconidae)

(Larval parasitoid of Diamond Back Moth)

Stage of supply: Cocoons

75/100 cocoons (RC)

150/100 cocoons (RC)



Acerophagus papayae Noyes &

Schauff

(Hymenoptera: Encyrtidae)

(Parasitoid of papaya mealybug)

Stage of supply: Adults

75/100 adults (RG)

150/100 adults (RC)

